

## Foundations of Hope Building and Ministry Plan

A new multi-purpose ministry center that will provide additional space for YO! (youth) and P3 (children) activities, a weekly seniors ministry, special events like the Christmas Dinner Theater, recreation and sports leagues, larger community meals, plays and dinners, seminars for church and community, a place where youth and adults can gather Monday through Friday. Other possibilities include a day care center, after school program, and a place to walk and exercise in the winter.

**Reconfigure our existing facility** to provide a safer entry way, a larger gathering place to welcome people and show Westfield hospitality, update existing class rooms and provide additional classrooms, and better security for our young people.

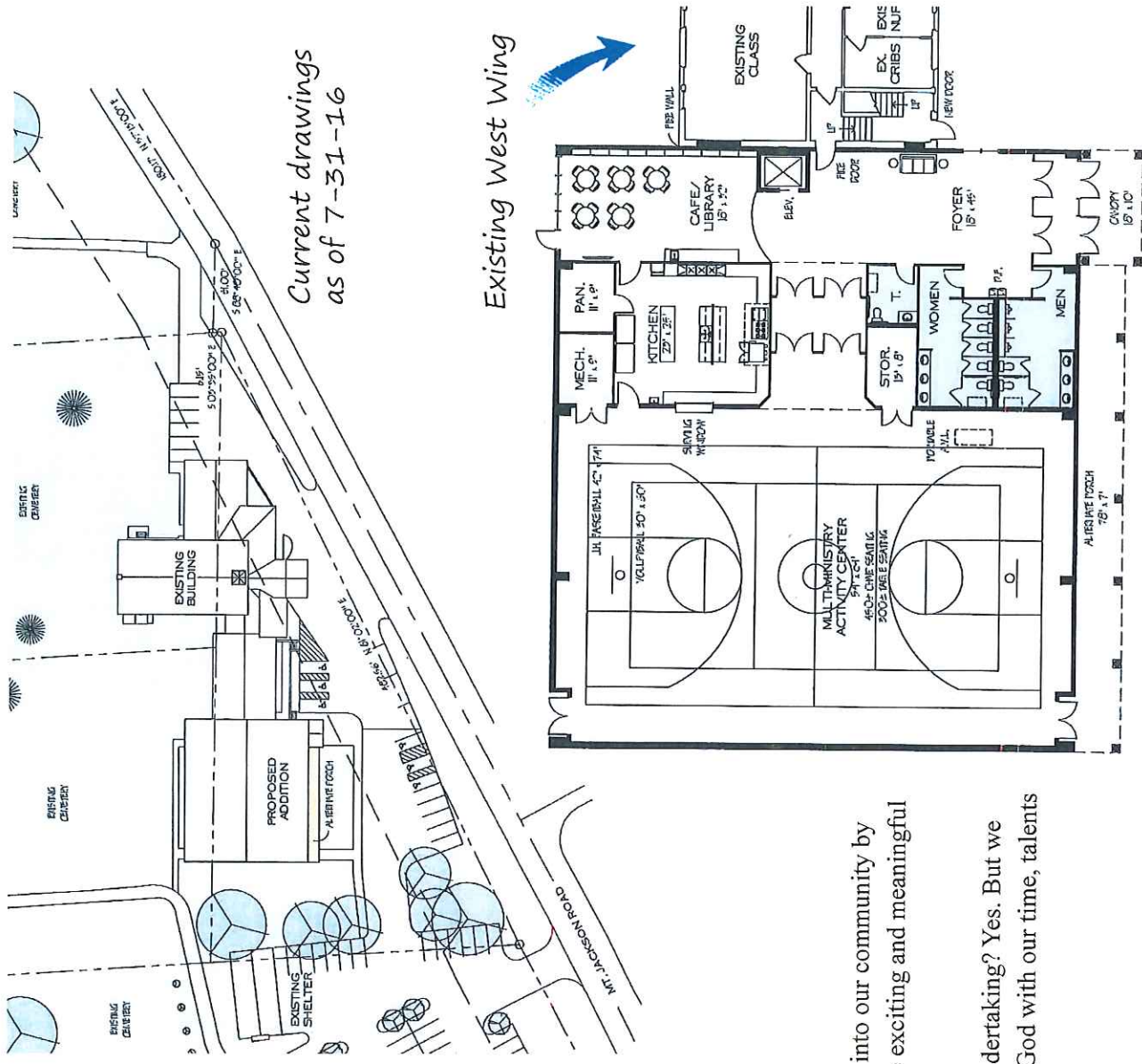
**Technology** will be updated and expanded so that each room will have smart TVs and internet access. Monitors at entrances and in hallways will provide information about the building and Westfield activities for visitors and members. Screens in the sanctuary will facilitate the announcement time and enhance worship with videos, scripture, and song lyrics when needed.

**Foundations of Hope** is designed to facilitate ministry and make a visual statement about our family of faith. In short:

- It says that we care about people and want to meet people at the point of their needs.
- It says that we are committed to being more than a place for worship on the weekends and meetings during the week.
- It says that we are so convinced in and committed to the Gospel of Jesus Christ that we are willing to take the risk to be a dynamic force for Christ in our community.

We believe this plan will enable us to enhance our ability to reach out into our community by providing ministries that connect people to the church in ways that are exciting and meaningful for them.

The cost of construction and renovation is \$2.4 million. A daunting undertaking? Yes. But we can do this if we will join hearts and minds and offer our very best to God with our time, talents and treasure.



## FROM OUR PASTOR

Our Foundations of Hope leadership team is hard at work laying the ground work for the public phase of the building campaign which will take place from October 23 to November 20. Part of laying that ground work is providing you with information about the building and ministries Foundations of Hope will fund.

This newsletter contains basic information about the project. More details will be forthcoming as they are developed and refined. But for now, please take the time to study the project details in this newsletter, pray about them and share your thoughts with family and friends.

Thank you for your positive spirit, your passion for ministry, and your love for our Savior Jesus Christ. *"It is in him that we live and move and have our being."* Acts 17:28 God's blessings as you seek to discover what God wants to do through you to fulfill his will at Westfield.

Grateful to be your pastor,

Paul Votaw



## FROM OUR CAMPAIGN CO-CHAIR

We are embarking on an exciting journey. A journey that those who have gone before us have taken many times. The best part is we have a great leader at the helm: Jesus! He is the light to show us the way, the wind beneath our wings, the glue that hold us together. Christ is the foundation on which we stand.

Westfield has strong roots, comprised of people who are not afraid to step out in faith. And we can do that because we know that Jesus Christ knows each one of us by name. He knows our joy, our pain, and our future.

Pray and pray some more. We know God has a plan for Westfield. Come along on this journey and see what we are capable of.

Jump in with faith, hope and love for one another. See what God can do through you. Open your heart, mind and soul.

Let's make this campaign a positive, prayerful faith venture of hope.

Your servant in Christ,

Linda McBride



# Foundations of Hope

## Westfield Church

